

Appendix B.

Table B-1. 303(d) Listed Waters in the Chehalis Watershed

Water body	Parameter	Lat/Lon; location	Old code	New code
CHEHALIS RIVER	Temperature	17N 07W 18	PB33WC	WA-22-4040
BLACK CREEK	Temperature	18N 07W 17	SC15QZ	WA-22-4025
CHEHALIS RIVER	Fecal Coliform	17N 07W 18	PB33WC	WA-22-4040
GRAYS HARBOR (INNER)	Fecal Coliform	46.965 123.875	390KRD	WA-22-0030
GRAYS HARBOR (INNER)	Fecal Coliform	17N 09W 10	DS29ZH	WA-22-0030
GRAYS HARBOR (OUTER)	Fecal Coliform	46.865 124.045	390KRD	WA-22-0020
GRAYS HARBOR COUNTY DRAINAGE DITCH (GHCCD-1)	NO. 14,4'-DDD	15N 11W 06 0 0	AB55IV	None75
GRAYS HARBOR COUNTY DRAINAGE DITCH NO. 1(GHCCD-1)	Azinphos-Methyl, Carbaryl, Diazinon, Parathion	15N 11W 06 0 0	AB55IV	None75
HUMPTULIPS RIVER 20N 10W 17 NY74PY WA	Temperature	20N 10W 17	NY74PY	WA
HUMPTULIPS RIVER	Temperature	20N 11W 12	TU95RU	WA
RABBIT CREEK	Temperature	21N 06W 28	MV99EG	WA
WILDCAT CREEK	Temperature	18N 05W 14	QS65DS	WA
WYNOOCHEE RIVER PB22WC	Temperature	18N 08W 05		WA
BERWICK CREEK	Fecal Coliform	13N 02W 09	KB60UI	WA
BLACK LAKE	Total Phosphorus	18N 02W	GW14BM	WA-23-9010
BLACK RIVER	Temperature	15N 04W05	GW14BM	WA-23-1015
CHEHALIS RIVER	Fecal Coliform	13N 05W 34	DS29ZH	WA-23-1100
CHEHALIS RIVER	Fecal Coliform, PCB-1254, PCB-1260 Temperature	14N 02W 07	DS29ZH	WA-23-1020
CHEHALIS RIVER	Fecal Coliform, Temperature	14N 03W 24	DS29ZH	WA-23-1020
CHEHALIS RIVER	Fecal Coliform, Temperature	17N 05W 28	DS29ZH	WA-23-1010
CHEHALIS RIVER	Temperature	13N 05W 12	DS29ZH	WA-23-1100
CHEHALIS RIVER	Temperature	14N 02W 18	DS29ZH	WA-23-1020
CHEHALIS RIVER	Temperature	14N 02W 24	HF89DS	WA-23-1020
CHEHALIS RIVER	Temperature	14N 03W 12	DS29ZH	WA-23-1020
CHEHALIS RIVER	Temperature	14N 03W 25	DS29ZH	WA-23-1020
CHEHALIS RIVER	Temperature	15N 03W 22	DS29ZH	WA-23-1010
CHEHALIS RIVER	Temperature	16N 05W 36	DS29ZH	WA-23-1010
CHEHALIS RIVER	Temperature	17N 05W 28	UE35GF	WA-23-1010
CHEHALIS RIVER, S.F	Temperature	13N 04W 24	AR83EA	WA-23-1106
DEMSEY CREEK	Dissolved Oxygen, Fecal Coliform	17N 03W 13	FM81JM	WA-23-2060
DILLENBAUGH CREEK	Fecal Coliform	13N 02W 05	EV39SR	WA-23-1027
CHEHALIS RIVER	Temperature	17N 05W 28	UE35GF	WA-23-1010
CHEHALIS RIVER, S.F	Temperature	13N 04W 24	AR83EA	WA-23-1106
DILLENBAUGH CREEK	Fecal Coliform, Temperature	13N 02W 05	EV39SR	WA-23-1027
DILLENBAUGH CREEK	Fecal Coliform	13N 02W09	EV39SR	WA-23-1027
DILLENBAUGH CREEK	Fecal Coliform	13N 02W 10	EV39SR	WA-23-1027
DILLENBAUGH CREEK	Fecal Coliform, Temperature	14N 02W 31	EV39SR	WA-23-1027
ELK CREEK	Fecal Coliform	13N 05W 03	WI74SE	WA-23-1108
LINCOLN CREEK	Fecal Coliform	15N 03W 34	AP15HC	WA-23-1019
CREEKLINCOLN CREEK	Fecal Coliform	15N 04W 33	AP15HC	WA-23-1019
LINCOLN CREEK	Temperature	15N 03W 29	EK51RF	WA-23-1019
NEWAUKUM RIVER	Fecal Coliform, Temperature	14N 02W 31	WC81BX	WA-23-1070
SALZER CREEK	Fecal Coliform,	14N 02W 19	QF44VO	WA-23-1023

	Temperature			
SALZER CREEK	Fecal Coliform	14N 02W 23	QF44VO	WA-23-1023
SCATTER CREEK	Fecal Coliform, pH	15N 03W 08	AQ85FY	WA-23-1018

Appendix C. Current Monitoring Locations

Table C-1. Current Monitoring Locations

	Location	Monitoring Agency	Conventionals	Metals	Fecal coliform	Temp	pH	DO	Others	Flow measured	USGS gage nearby
1	Humtulpis River near Humtulpis	Ecology	monthly			continuously				X	
2	Chehalis River at Porter	Ecology	monthly	Bi-monthly		continuously				X	X
3	Chehalis River at Prather Road	Ecology	monthly for one year only							X	
4	Chehalis River at Dryad	Ecology	monthly			continuously				X	
5	Grays Harbor-Chehalis River	Ecology	monthly (dissolved nitrate, dissolved NH ₃ , dissolved orthophosphate, dissolved silicate)		monthly	monthly		monthly	monthly (secchi, salinity)		
6	Grays Harbor-Mid S. Channel	Ecology	monthly (dissolved nitrate, dissolved NH ₃ , dissolved orthophosphate, dissolved silicate)		monthly	monthly		monthly	monthly (secchi, salinity)		
7	Grays Harbor-Moon Island Reach	Ecology	monthly			monthly		monthly	monthly (secchi, salinity)		
8	Grays Harbor-N Whitcomb Flats	Ecology	monthly			monthly		monthly	monthly (secchi, salinity)		
9	Grays Harbor-Damon Point	Ecology	monthly (dissolved nitrate, dissolved NH ₃ , dissolved orthophosphate, dissolved silicate)			monthly		monthly	monthly (secchi, salinity)		
10	Satsops River at Mouth of river	GHCD			monthly						
11	Satsops River at Twin bridges	GHCD			monthly						
12	Satsops River at bluff	GHCD			monthly						
13	Satsops River Blow middle fork and west fork confluence	GHCD			monthly						

	Location	Monitoring Agency	Conventionals	Metals	Fecal coliform	Temp	pH	DO	Others	Flow measured	USGS gage nearby
14	Satsops River at Middle fork Rd. bridge over west fork	GHCD			monthly						
15	Satsops River at Falco/Webster property	GHCD			monthly						
16	Satsops River at Schmitz property at county line	GHCD			monthly						
17	Satsops River at Beckwiths property	GHCD			monthly						
18	Satsops River at Dublins property	GHCD			monthly						
19	Satsops River at Cougar Smith Rd – middle fork bridge	GHCD			monthly						
20	Satsops River at Couger Smith Rd – west fork bridge	GHCD			monthly						
21	Humptulips River at mouth of river	GHCD			monthly						
22	Humptulips River at Highway 109 bridge	GHCD			monthly						
23	Humptulips River at Copalis xing bridge	GHCD			monthly						
24	Humptulips River at Highway 101 bridge	GHCD			monthly						
25	Humptulips River at Donkey Creek Bridge	GHCD			monthly						
26	Wynoochee River at Mouth of river	GHCD			monthly						
27	Wynoochee River at Devonshire Rd. bridge	GHCD			monthly						
28	Wynoochee River at Geissler Rd bridge	GHCD			monthly						
29	Wynoochee River at Wishkah cutoff Rd bridge	GHCD			monthly						
30	Wynoochee River at Old white bridge	GHCD			monthly						
31	Chehalis River at Independence Rd	Thurston Co.	monthly in winter; twice in dry season for nitrate/nitrite, TP,		monthly in winter; twice in dry season	monthly in winter; twice in dry season	monthly in winter; twice in dry season	monthly in winter; twice in dry season	monthly in winter; twice in dry season (turbidity, conductivity)	X	

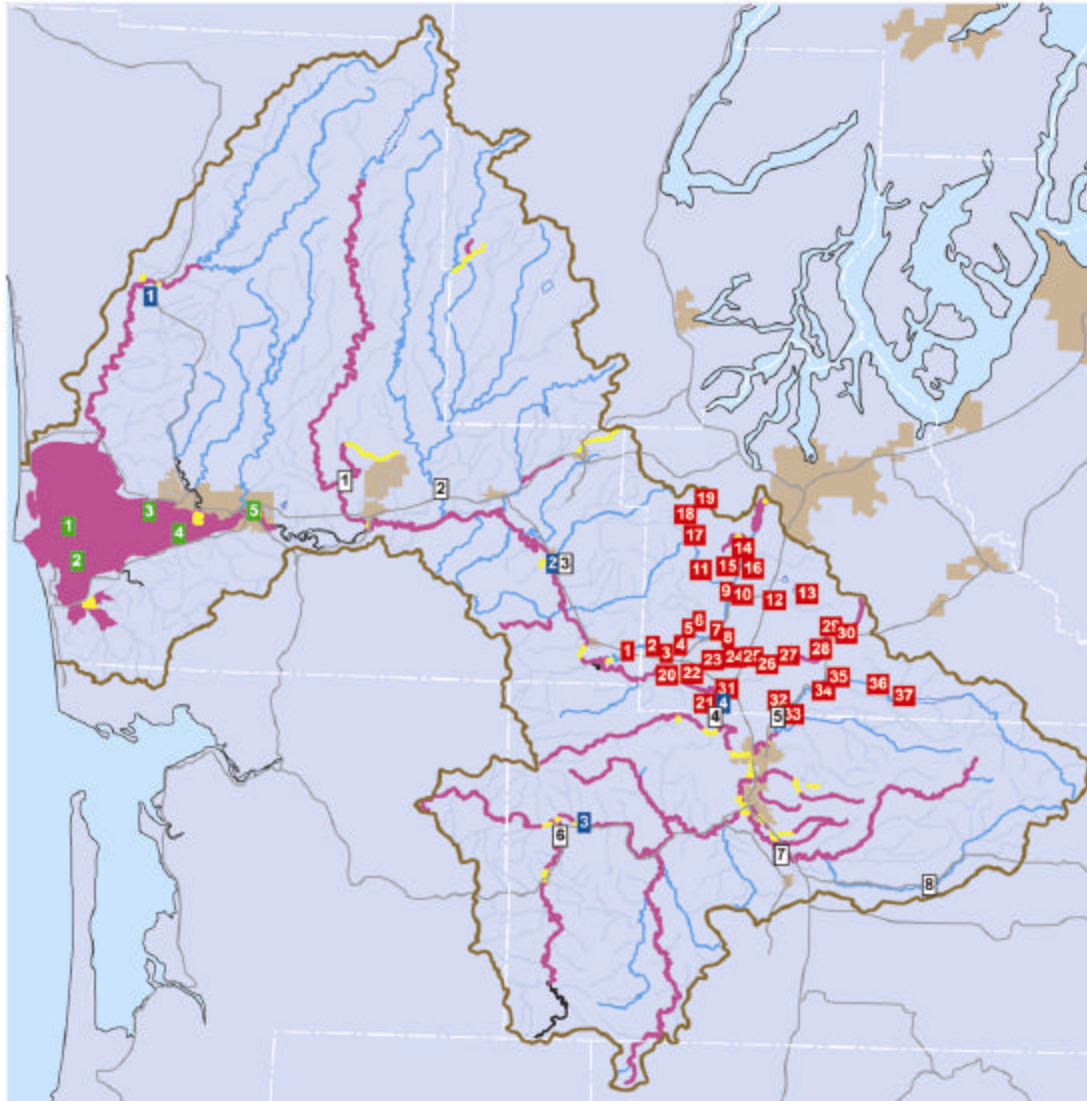
	Location	Monitoring Agency	Conventionals	Metals	Fecal coliform	Temp	pH	DO	Others	Flow measured	USGS gage nearby
32	Chehalis River at Prather Rd	Thurston Co.	monthly in winter; twice in dry season		monthly in winter; twice in dry season	monthly in winter; twice in dry season	monthly in winter; twice in dry season	monthly in winter; twice in dry season	monthly in winter; twice in dry season (turbidity, conductivity)	X	
33	Prairie Creek at Old Hwy 9	Thurston Co.	monthly in winter; twice in dry season		monthly in winter; twice in dry season	monthly in winter; twice in dry season	monthly in winter; twice in dry season	monthly in winter; twice in dry season	monthly in winter; twice in dry season (turbidity, conductivity)	X	
34	Scatter Creek at Gibson Rd	Thurston Co.	monthly in winter; twice in dry season		monthly in winter; twice in dry season	monthly in winter; twice in dry season	monthly in winter; twice in dry season	monthly in winter; twice in dry season	monthly in winter; twice in dry season (turbidity, conductivity)	X	
35	Scatter Creek at James Rd	Thurston Co.	Monthly in winter; twice in dry season		monthly in winter; twice in dry season	monthly in winter; twice in dry season	monthly in winter; twice in dry season	Monthly in winter; twice in dry season	monthly in winter; twice in dry season (turbidity, conductivity)	X	
36	Scatter Creek at Leitner Rd	Thurston Co.	monthly in winter; twice in dry season		monthly in winter; twice in dry season	monthly in winter; twice in dry season	monthly in winter; twice in dry season	monthly in winter; twice in dry season	monthly in winter; twice in dry season (turbidity, conductivity)	X	
37	Stillman Creek near Boistfort	Ecology							1998 Bioassessment		
38	Cook Creek near mouth	Ecology							1998 Bioassessment		
39	Porter Creek	Ecology							1998 Bioassessment		
40	Monroe Creek	Ecology							1998 Bioassessment		
41	Black River at Sweckers Dock	Chehalis Tribe	Continuous			Continuous	Continuous	Continuous	% Saturation (continuous)		
42	Black River at Mouth of Mima Creek	Chehalis Tribe	Continuous			Continuous	Continuous	Continuous	% Saturation (continuous)		
43	Black River at Canoe Club	Chehalis Tribe	Continuous			Continuous	Continuous	Continuous	% Saturation (continuous)		
44	Black River at Littlerock Boat Launch	Chehalis Tribe	Continuous			Continuous	Continuous	Continuous	% Saturation (continuous)		

	Location	Monitoring Agency	Conventionals	Metals	Fecal coliform	Temp	pH	DO	Others	Flow measured	USGS gage nearby
45	Black River at Howanut Road Bridge	Chehalis Tribe	Continuous			Continuous	Continuous	Continuous	% Saturation (continuous)		
46	Black River at Moon Road Bridge	Chehalis Tribe	Continuous			Continuous	Continuous	Continuous	% Saturation (continuous)		
47	Black River at Steel Trestle	Chehalis Tribe	Continuous			Continuous	Continuous	Continuous	% Saturation (continuous)		
48	Black River at 123 rd Ave. Bridge	Chehalis Tribe	Continuous			Continuous	Continuous	Continuous	% Saturation (continuous)		
49	Black River at 110 th Ave Bridge	Chehalis Tribe	Continuous			Continuous	Continuous	Continuous	% Saturation (continuous)		
50	Black Lake Ditch (at the north end of Black Lake that flows into Percival Creek	Thurston County	Continuous							X	
51	Lincoln Creek at Mile 1 Bridge	Chehalis Tribe	Continuous			Continuous	Continuous	Continuous	% Saturation (continuous)		
52	Lincoln Creek at Teague Road Bridge	Chehalis Tribe	Continuous			Continuous	Continuous	Continuous	% Saturation (continuous)		
53	Lincoln Creek at sludge site	Chehalis Tribe	Continuous			Continuous	Continuous	Continuous	% Saturation (continuous)		
54	Lincoln Bridge at (1977) Echo Road Bridge	Chehalis Tribe	Continuous			Continuous	Continuous	Continuous	% Saturation (continuous)		
55	Lincoln Creek at Buck Road Bridge	Chehalis Tribe	Continuous			Continuous	Continuous	Continuous	% Saturation (continuous)		
56	Lincoln Creek at Lepisto Road Bridge	Chehalis Tribe	Continuous			Continuous	Continuous	Continuous	% Saturation (continuous)		
57	Gerrard Creek at Jenkins #3	Chehalis Tribe	Continuous			Continuous	Continuous	Continuous	% Saturation (continuous)		
58	Gerrard Creek at Jenkins #2	Chehalis Tribe	Continuous			Continuous	Continuous	Continuous	% Saturation (continuous)		
59	Gerrard Creek at Jenkins #1	Chehalis Tribe	Continuous			Continuous	Continuous	Continuous	% Saturation (continuous)		
60	Gerrard Creek at Bridge south of Bowers	Chehalis Tribe	Continuous			Continuous	Continuous	Continuous	% Saturation (continuous)		
61	Gerrard Creek at Bridge East of Bowers	Chehalis Tribe	Continuous			Continuous	Continuous	Continuous	% Saturation (continuous)		

	Location	Monitoring Agency	Conventionals	Metals	Fecal coliform	Temp	pH	DO	Others	Flow measured	USGS gage nearby
62	Gerrard Creek at Brooklyn Road Bridge	Chehalis Tribe	Continuous			Continuous	Continuous	Continuous	% Saturation (continuous)		
63	Elk Creek Road bridge near Dokter Road	CRC			quarterly	quarterly	quarterly	quarterly	2002 Bioassessment	Yes	
64	South Fork Chehalis bridge at Boistfort, near Lost Valley Road intersection	CRC			quarterly	quarterly	quarterly	quarterly	2002 Bioassessment	Yes	
65	South Fork Newaukum Off of Pigeon Springs Road	CRC			quarterly	quarterly	quarterly	quarterly	2002 Bioassessment	Yes	
66	Middle Fork Newaukum At the end of Allen Road	CRC			quarterly	quarterly	quarterly	quarterly	2002 Bioassessment	Yes	
67 -- 95	29 sampling locations (unspecified shellfish growing areas in Grays Harbor)	DOH			monthly	monthly			monthly salinity	no	

Table was completed based on information collected from the agencies listed.

Ecology = Washington Department of Ecology
GHCD = Grays Harbor Conservation District
Thurston Co. = Thurston County
Chehalis Tribe = Confederated Tribes of Chehalis
CRC = Chehalis River Council
DOH = Washington State Department of Health



Ecology Marine Monitoring Stations

- 1. GYS016
- 2. GYS015
- 3. GYS009
- 4. GYS008
- 5. GYS004

Ecology Stream Monitoring Stations*

- 1. 22A070—Humptulips River Near Humptulips (long-term)
- 2. 23A070—Chehalis River at Porter (long-term)
- 3. 23A160—Chehalis River at Dryad (long-term)
- 4. 23A100—Chehalis River at Prather Road (basin)

* Ecology stream monitoring stations are classified as "long-term" (sampled monthly every year) or "basin" (sampled monthly for one year).

1996 303d Listed Waters
1998 303d Listed Waters

USGS Stream Flow Gauges

- 1. Wynoochee River
- 2. Satsop River
- 3. Chehalis River at Porter
- 4. Chehalis River at Ground Mound
- 5. Skookumchuck River
- 6. Chehalis River Near Doty
- 7. Newaukum River
- 8. South Fork Newaukum River

Thurston County Monitoring Stations

- 1. BLABL0000—Black River at Howanut Road Bridge
- 2. BLABL0010—Black River at Moon Road Bridge
- 3. BLABL0020—Black River at Johnsons Dock
- 4. BLABL0030—Black River at Sweckers Dock
- 5. BLAMI0330—Mima Tributary at Gate Road
- 6. BLAMI0310—Mima Creek at Gate Road
- 7. BLABL0040—Black River at Canoe Club
- 8. BLACA0500—Canoe Club Creek off Highway 121
- 9. BLABL0050—Black River at 128th Avenue Bridge
- 10. BLABE0700—Beaver Creek at Littlerock
- 11. BLAWA0810—Waddell Creek at Waddell Creek Road
- 12. BLABE0750—Beaver Creek at Case Road
- 13. BLADEL0000—Deep Lake
- 14. BLASA1010—Salmon Creek off Creekwood
- 15. BLABL0090—Black River at 110th Avenue Bridge
- 16. BLABM0910—Blooms Ditch at 110th Avenue
- 17. BLADM1210—Dempsey Creek at Delphi Road
- 18. BLALE1220—Lehman Creek at Delphi Road
- 19. BLABT1230—Beatty Creek at Delphi Road
- 20. CHECH0010—Chehalis River at Independence Road
- 21. CHECH0040—Chehalis River at Prather Road
- 22. CHESC0100—Scatter Creek at James Road
- 23. CHESC0110—Scatter Creek at Sargen Road
- 24. CHESC0111—Scatter Creek at Wildlife Refuge
- 25. CHESC0120—Scatter Creek at Leitner Road
- 26. CHESC0130—Scatter Creek at Gibson Road
- 27. CHESC0131—Scatter Creek at Oak Drive
- 28. CHESC0140—Scatter Creek at Old Highway 99 South
- 29. CHESC0141—Scatter Creek at Old Highway 99 North
- 30. CHESC0199—Scatter Creek at Old Military Road
- 31. CHEPR0510—Prairie Creek at Old Highway 9
- 32. SKOTR0100—Troy Creek at Troy Street
- 33. SKOSK0000—Skookumchuck at USGS Gage Near Highway 507
- 34. SKOSK0010—Skookumchuck at Volunteer Park
- 35. SKOSK0020—Skookumchuck at Bridge Near Coal Street
- 36. SKOSK0030—Skookumchuck Near Steelhead Court
- 37. SKOSK0099—Skookumchuck Near Bloody Run Creek

Figure 1. Map of Monitoring Locations